

# MICHELLE ROBINSON ARCHITECTS

Creating partnerships for design

## FENWICK ISLAND LIGHTHOUSE RESTORATION

Client:  
State of Delaware  
Department of Transportation

Location:  
Fenwick Island, DE

MRA Services Provided:  
Project Management  
RFP Development  
Project Communications  
Agency Coordination

Project Cost:  
Not Disclosed

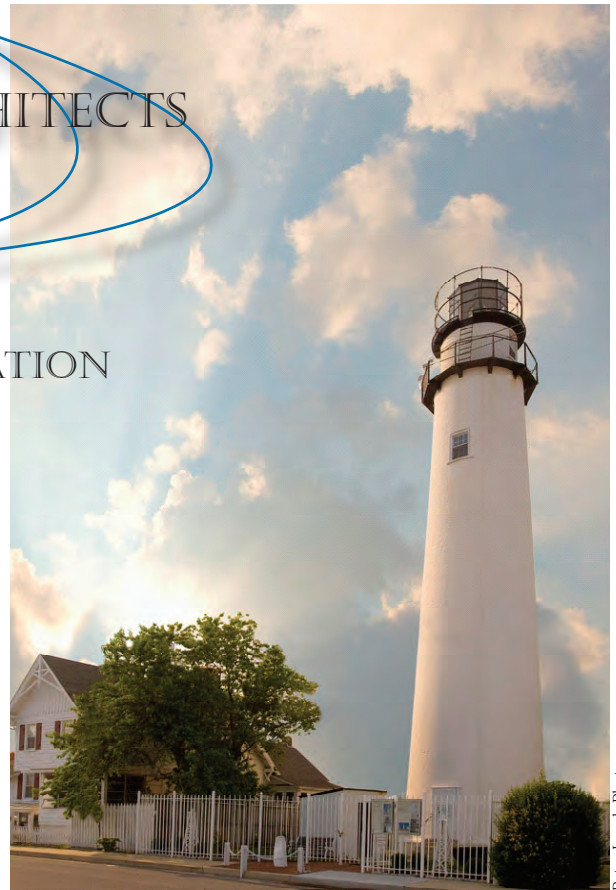
At 87 feet tall, the Fenwick Island Lighthouse is a brick tower that encloses a spiral cast-iron staircase which connects the keeper with the watch room and the lamp room atop the tower. This project encompassed complete restoration of the interior and exterior of the lighthouse.

In 1856, Congress approved the construction of the Fenwick Island lighthouse to bridge the 60 mile gap between beacons at Cape Henlopen and at Assateague Island. By 1859, the lighthouse began casting its light, which could be seen up to 15 miles away on a clear night. However, by 1940, advances in automation led to the decline in use and maintenance of lighthouses, including Fenwick Island's. Today, the current owners of Fenwick Island Lighthouse and its buildings work cooperatively with the State to keep the site suggestive of its pre-1940's grandeur as a beacon of safety surrounded by the desolation and harshness of the East Coast marine environment.

As project manager for Transportation Enhancement and historic renovation projects such as this one, Michelle Robinson Architects has established a reputation for thoroughness, diligent communications, and timely achievement of project goals.

A Certified WBE/DBE

Box 40, Mt. Gretna, PA 17064 \* (267) 767-9644 \* [robinson.architect@verizon.net](mailto:robinson.architect@verizon.net)  
[www.michellerobinsonarchitects.com](http://www.michellerobinsonarchitects.com)



Peter Leach Photo

Exterior...



before



during

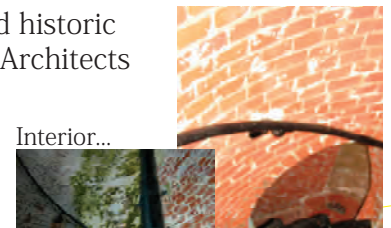
Stairs...



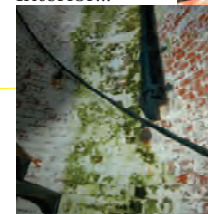
before



after



Interior...



after

before